

Petronila & San Fernando Creeks WPP: *Science & Monitoring Workgroup*

Texas Water Resources Institute

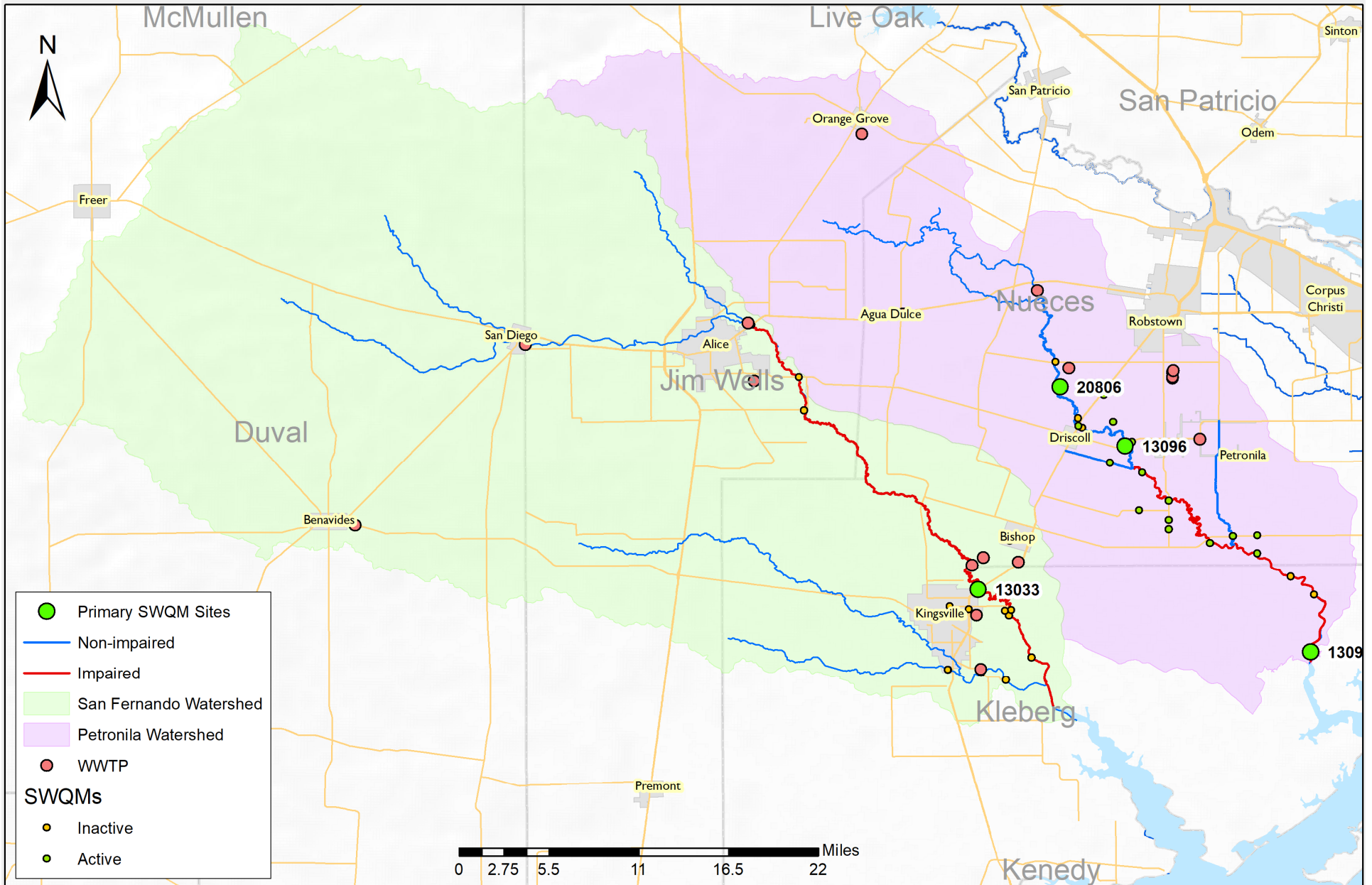
May 6, 2021



Meeting Outline

- ⦿ Discuss monitoring aspect of WPPs
- ⦿ Highlight existing WPP monitoring plans
- ⦿ Discuss ongoing monitoring efforts

Petronila & San Fernando Creek



Key Elements of Watershed Plans

- Identification of Sources of Bacteria
- Estimated Loading Reductions Needed
- Description of Management Measures
- Education and Outreach Needed
- Schedule for Implementation
- Implementation Milestones
- Possible Sources of Financial Assistance and Estimated Costs
- Measures of Success (i.e. indicators to measure reductions)
- Monitoring plan to evaluate effectiveness

Monitoring Projects Included in previous WPPs

- ⊙ Expanded (spatial/temporal) routine monitoring
- ⊙ BMP Effectiveness Monitoring
- ⊙ Volunteer water quality monitoring
- ⊙ Focused investigative/intensive monitoring program
- ⊙ Bacteria source tracking efforts

Discussion Questions

- ⊙ What current research is going on in the watershed?
- ⊙ Any potential data gaps where monitoring efforts should be started/strengthened?

Questions?

Clare Escamilla
Texas Water Resources
Institute
clare.entwistle@ag.tamu.edu

Lucas Gregory, PhD
Texas Water Resources
Institute
lfgregory@ag.tamu.edu

"This effort was funded through a State Nonpoint Source grant from the Texas State Soil and Water Conservation Board."